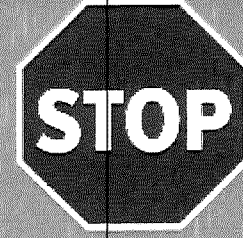
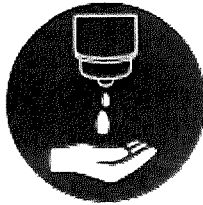


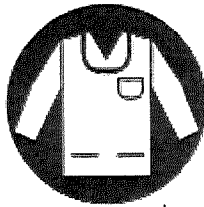
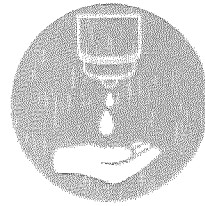
contact
**Enhanced Droplet &
Contact Precautions**
(in addition to Standard Precautions)



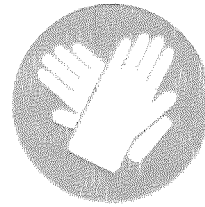
All who enter must:



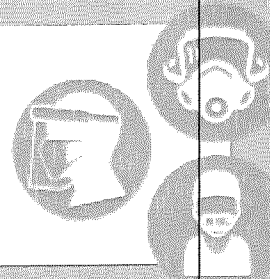
**Clean hands when
entering and
leaving the room.**



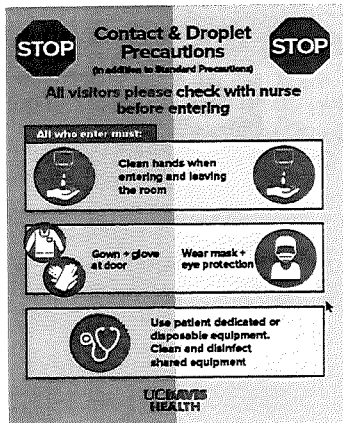
**Gown +
gloves at door**



**PAPR or fitted N-95
with faceshield/goggles
or source-controlled
elastomeric respirator with
faceshield/goggles**



Combined signage and other important information



Some patients might be having tests for diseases that have not resulted or have resulted with more than one organism. The different organisms might require two types of precautions. Examples are patients who are being tested for Respiratory Viruses (RV) (examples of the pathogens tested in a RV Panel are Influenza, Rhinovirus/Enterovirus, Respiratory Syncytial Virus or a patient that has tested positive for Influenza and Rhinovirus).

Contact and Droplet Precautions requires, gown, gloves and eye protection, as well as proper hand hygiene. Follow guidelines above.

During the severe acute respiratory syndrome coronavirus 2 (COVID-19) pandemic a new isolation designation was created for staff and patient safety. This isolation is designated as Enhanced Droplet/Contact.

Prior to entering the patient's room/care area:

- Wash or gel hands
- Gown
- PAPR, N-95 mask, or elastomeric respirator that is source controlled with a face mask over the exhalation valve
- Eye goggles or face shield
- Gloves

Prior to exiting a patient's room/care area:

- Take OFF and dispose outside room:
- Gown and gloves
- Eye goggles or face shield
- PAPR, N-95 mask, or source controlled elastomeric respirator
- Wash or gel hands

